

# ESR

:

- .
- .
- IGP EGP
- IGP EGP

**RIB (Routing Information Base)** -, , : , (OSPF, BGP, RIP) directly connected. (FIB – forwarding information base).

**RIB ( )** – RIB, , , (network, redistribute) RIB ( ) RIB (static route, directly connected).

:

- (EGP), .
- (IGP), .

IGP	EGP
RIP	eBGP
OSPF	
iBGP	

RIB .

IGP EGP .

.

RIB :

- 
- Redistribute
- Network

.

, direct , ( OSPF RIP);  
, IGP EGP.

### Redistribute

, direct connected route-map.  
: esr(config-ospf)# redistribute bgp 100 - , BGP 100.

### Network

, RIB .  
: esr(config-ospf-area)# network 10.0.0.0/8

- .
- :
- Route-map (in)
- Prefix-list (in)
- Route-map (in) + Prefix-list (in)
- Redistribute + route-map
- .
- , , , .

### Route-map (in)

, . , route-map. , route-map, . , (rule) : action permit.  
: esr(config-ospf)# route-map <RM\_NAME> in

### Prefix-list (in)

, . , prefix-list. prefix-list .  
: esr(config-ospf)# prefix-list <PL\_NAME> in

### Route-map (in) + Prefix-list (in)

route-map prefix-list , . , .

### Redistribute + route-map

redistribute route-map, RIB, route-map.  
: redistribute bgp 100 route-map <RM\_NAME> - BGP 100, route-map <RM\_NAME>.

- , RIB , .
- IGP EGP ( ):
- IGP , , IGP, . , , RIB , .
  - EGP , . , .

IGP.

OSPF RIP , RIB network redistribute, ( ) !

iBGP RIB .

:

- Route-map (out)
- Prefix-list (out)
- Route-map (out) + Prefix-list (out)

RIB .

### Route-map (out)

, : . route-map, route-map IGP, . . , (rule) : action deny.

*: esr(config-ospf)# route-map <RM\_NAME> out*

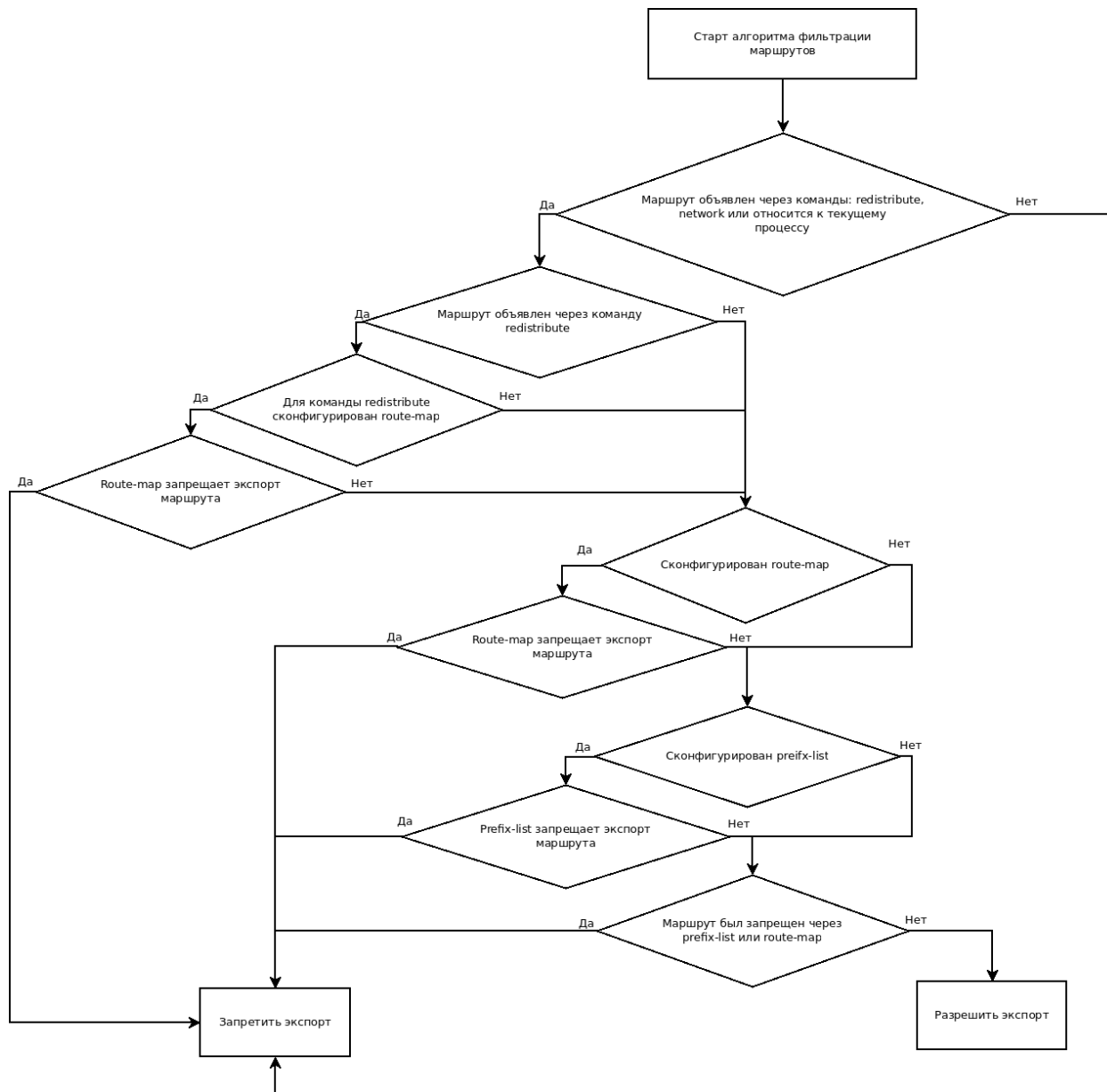
### Prefix-list (out)

, : . prefix-list, prefix-list IGP, .

*: esr(config-ospf)# prefix-list <PL\_NAME> out*

### Route-map (out) + Prefix-list (out)

route-map prefix-list . , .



1 – IGP (OSPF, RIP, iBGP)

EGP.

- Route-map (out)
- Prefix-list (out)
- Route-map (out) + Prefix-list (out)

### Route-map (out)

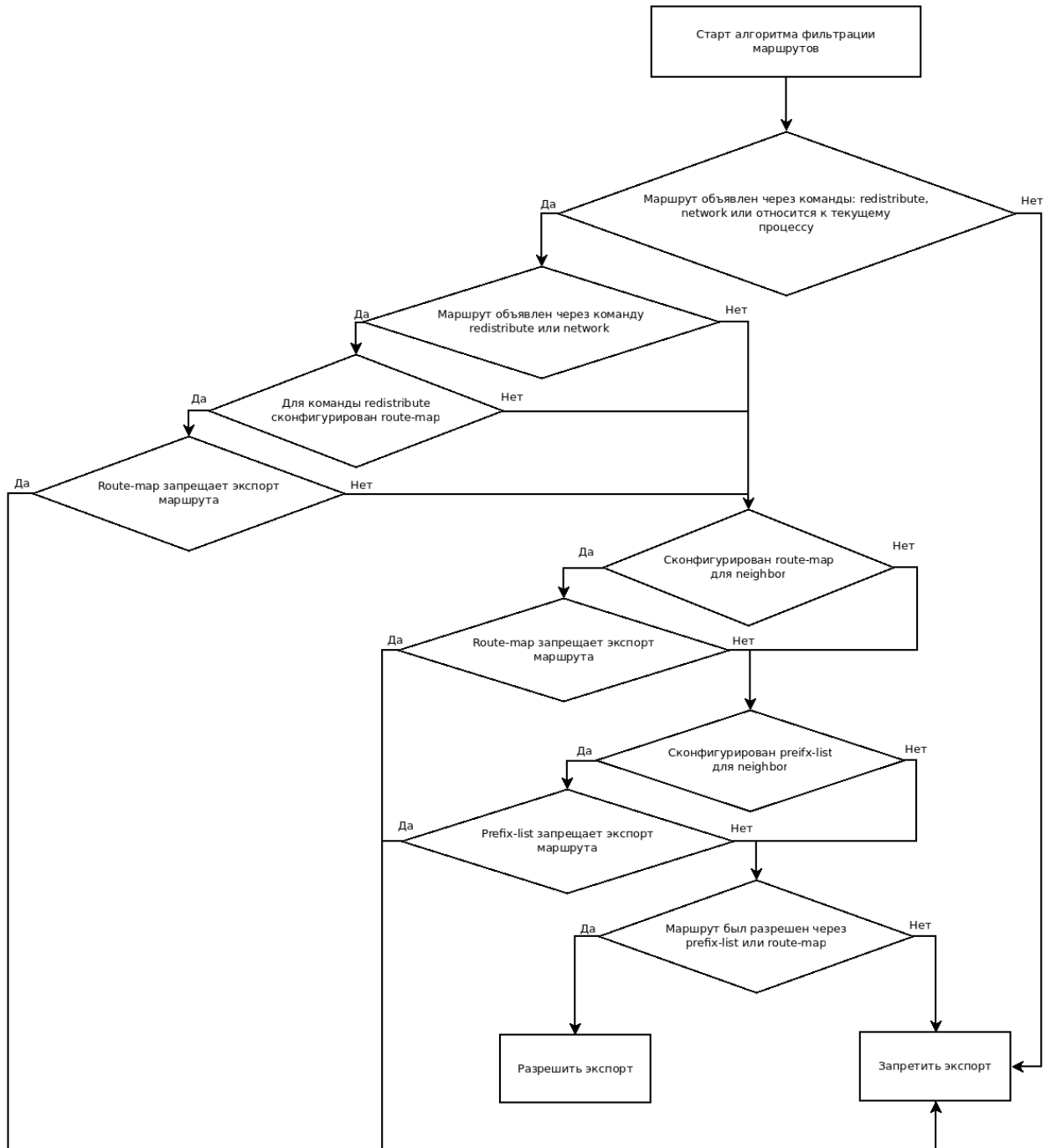
, : . route-map, route-map EGP, . . , (rule) : action permit.  
: *esr(config-bgp-neighbor)# route-map <RM\_NAME> out*

### Prefix-list (out)

, : . prefix-list, prefix-list EGP, .  
: *esr(config-bgp-neighbor)# prefix-list <PL\_NAME> out*

### Route-map (out) + Prefix-list (out)

route-map prefix-list . , .



2 – EGP (BGP)

route-map prefix-list